



ANADOLU BİRLİK
ÇELİK KOOPERATİFİ

(Anatolian Union)

Anadolu Birlik Steel Cooperative

"For the Structures of the Future"



www.anadolubirlikcelikkooperatifi.com



WHO WE ARE ?

Anatolian Union Steel Cooperative is a strong organization formed by the union of several well-established companies specializing in the steel industry from different regions of Turkey. Our partners, who operate with years of experience and expertise in the sector, aim to provide innovative, durable, and high-quality solutions in the steel industry.

This great union not only establishes a strong production infrastructure but also serves as an example of solidarity that will lead the development of the sector. As Anatolian Union, we work to produce reliable and long-lasting solutions and are committed to providing the best service to the industry.

To maintain our leading position in the sector, we are committed to continuous development. With innovative technologies and sustainable production models, we aim to add value to both the industry and our country.



ANADOLU BİRLİK
ÇELİK KOOPERATİFİ

OUR COOPERATIVE GOALS

OUR SHORT-TERM GOALS

- Establish a strong organizational structure to ensure the long-term sustainability of the cooperative.
- Develop innovative financial solutions to protect the financial rights of our members.
- Provide a continuous job guarantee to ensure that our producer members' machines are never idle.
- Increase the cooperative's visibility to become a strong and reliable brand in the industry.

OUR MID-TERM GOALS

- Increase the number of machines and members to expand and strengthen our production capacity.
- Establish the low-earthquake-risk Karaman-Konya region as the main center for the industry.
- Collaborate with universities and relevant institutions to develop projects that enhance efficiency.
- Position Karaman-Konya as a central hub for heavy steel structures and lead pioneering efforts in the sector.

OUR LONG-TERM GOALS

- Follow global developments in the field of steel construction to attract international orders, providing more profitable job opportunities for our members.
- Establish Karaman and Konya as significant centers for both light and heavy steel construction, serving both domestic and international markets.
- Achieve a large production capacity capable of rapidly responding to urgent steel structure demands from around the world in cases of earthquakes, wars, and natural disasters.



WHY CHOOSE A LIGHT STEEL HOUSE ?

Light steel houses offer a solid and innovative option in the modern construction industry with their safe, eco-friendly, economical, and durable structures. Ideal for those seeking an affordable and sustainable living space, light steel houses stand out with numerous advantages:

PROVIDES SAFETY

It provides a safe and comfortable living space with its flexible and durable structure in earthquake-prone areas.

VERSATILE IN USAGE

It can be used in areas such as residential buildings, offices, and social facilities, and can be adapted to needs with its modular structure.

DURABLE AND LONG-LASTING

It is resistant to corrosion, pest infestation, and moisture, remaining solid and reliable for many years.

LOW LABOR COSTS

Factory pre-production reduces labor costs, allowing projects to be completed more quickly.

EASY INSTALLATION

Ready parts are quickly assembled on-site, significantly shortening the construction time efficiently.

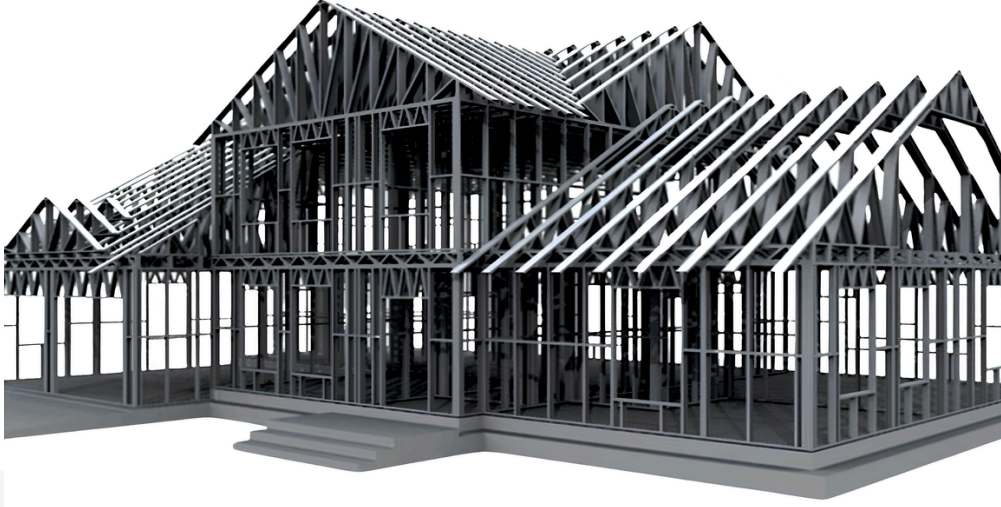
EFFICIENT SPACE UTILIZATION

With thin profiles, interiors are expanded to provide more functional and usable living space.

ECO-FRIENDLY

Made from recyclable steel and offering high energy efficiency, it is a sustainable building solution with a low environmental impact.





ANADOLU BİRLİK
ÇELİK KOOPERATİFİ

OUR COOPERATIVE BODIES

OUR BOARD MEMBERS

CHAIRMAN OF THE BOARD

YILMAZ SANDAL

VICE CHAIRMAN

MUSTAFA ÜLKER

BOARD MEMBER

ATILA AKGÜL

OUR AUDIT COMMITTEE MEMBERS

AUDIT COMMITTEE MEMBER

CENGİZ ESKİ

AUDIT COMMITTEE MEMBER

SİBEL YILDIRIM



ANADOLU BİRLİK
ÇELİK KOOPERATİFİ

COOPERATIVE MEMBERS



FİLO METAL

ÜRÜNLERİ VE İNŞAAT MALZEMELERİ
SANAYİ VE TİCARET LİMİTED ŞİRKETİ



REAKSİYON METAL YAPI

VE TEKSTİL SANAYİ TİCARET LİMİTED
ŞİRKETİ



SERDEM

PROFİL METAL İTHALAT VE İHRACAT SANAYİ
VE TİCARET LİMİTED ŞİRKETİ



KARBEL ÇELİK OTOMOTİV

SAĞLIK TURİZM İNŞAAT SANAYİ VE TİCARET
LİMİTED ŞİRKETİ



IRON HOUSE

ÇELİK İNŞAAT METAL SANAYİ VE TİCARET
LİMİTED ŞİRKETİ



ATAK

ALÇI PROFİLLERİ VE MAKİNA SANAYİ
TİCARET LİMİTED ŞİRKETİ



ZAIM GALVANİZ

METAL VE ELEKTRİK SANAYİ
TİCARET LİMİTED ŞİRKETİ

VISION STEEL
METAL SANAYİ TİCARET LİMİTED ŞİRKETİ



KIZILDENİZLER
İNŞAAT MALZEMELERİ, AHŞAP DOĞRAMA
VE ISI SİSTEMLERİ SANAYİ TİCARET
LİMİTED ŞİRKETİ



KAĞAN GRUP



H.İ.M. İNŞAAT
SANAYİ VE TİCARET LİMİTED ŞİRKETİ



TAÇ ÇELİK PREFABRİK
SANAYİ VE TİCARET LİMİTED ŞİRKETİ



SAVAN GRUP
GIDA ANONİM ŞİRKETİ



EZİO
ÇELİK LİMİTED ŞİRKETİ



ANADOLU BİRLİK
ÇELİK KOOPERATİFİ

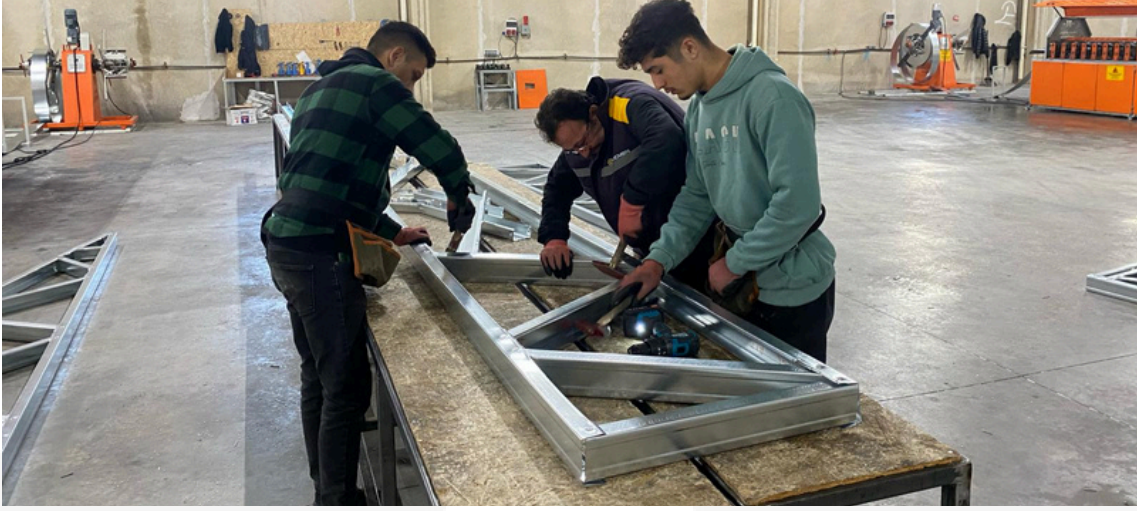
OUR PRODUCTION CAPACITY

RELIABLE SOLUTIONS WITH HIGH PRODUCTION CAPACITY

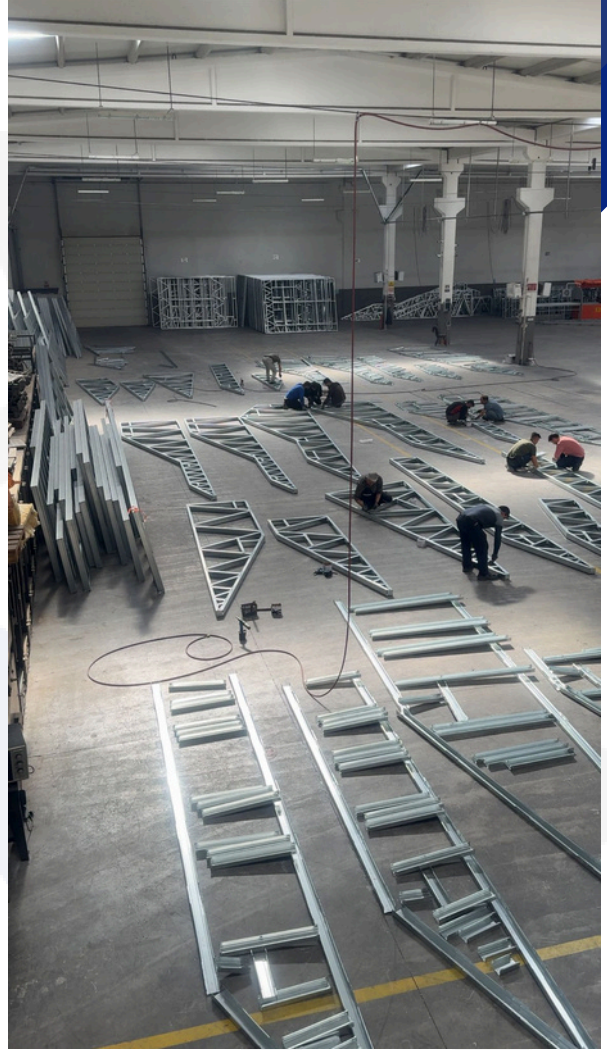
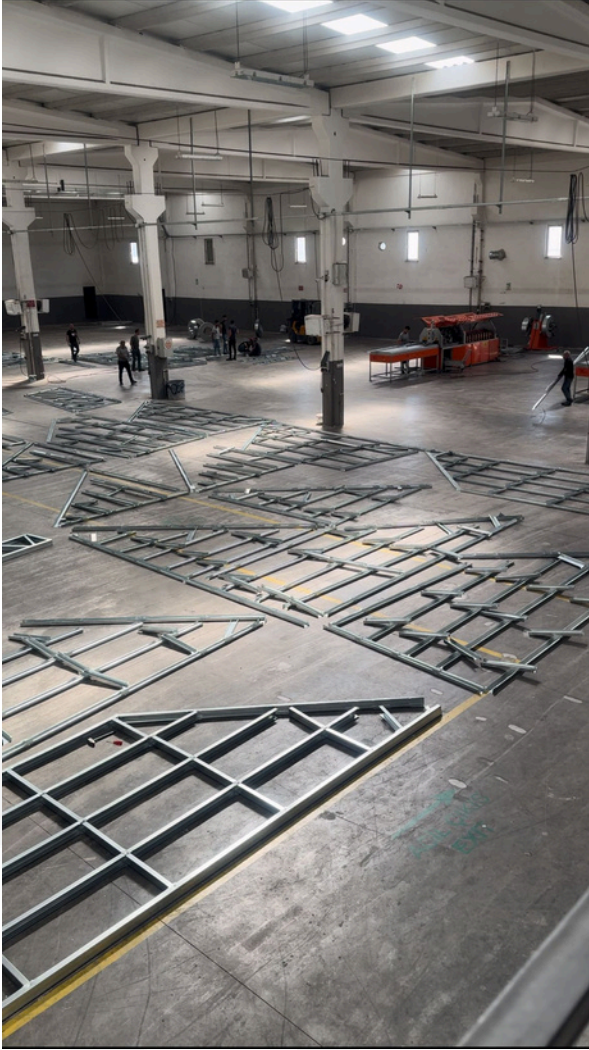
Anatolian Union Steel Cooperative strengthens its solid position in the industry day by day with a production capacity of 2,500 tons and more per month of light steel. This high production capacity not only meets the demand for steel but also allows us to implement large-scale projects quickly and reliably. With a monthly capacity to produce 530 Type 1 earthquake-resistant housing units, we make a significant contribution to our country's structural safety by ensuring the rapid provision of resilient buildings in the face of disasters.

Our cooperative employs 9 architects, 13 engineers, and 206 technical/qualified personnel. Additionally, our production activities are conducted in 27,500 m² of indoor space and 41,500 m² of outdoor space. With our strong production infrastructure, high-capacity facilities, and efficient work principles, we take pride in providing our customers with the most suitable solutions for their needs.





ANADOLU BİRLİK
ÇELİK KOOPERATİFİ



ANADOLU BİRLİK
ÇELİK KOOPERATİFİ



ANADOLU BİRLİK
ÇELİK KOOPERATİFİ



ANADOLU BİRLİK

ÇELİK KOOPERATİFİ

"For the Structures of the Future"



3. Cd. No:6, Organize Sanayi Bölgesi 70100
Merkez/Karaman



info@anadolubirlikcelikkoperatifi.com



www.anadolubirlikcelikkoperatifi.com

